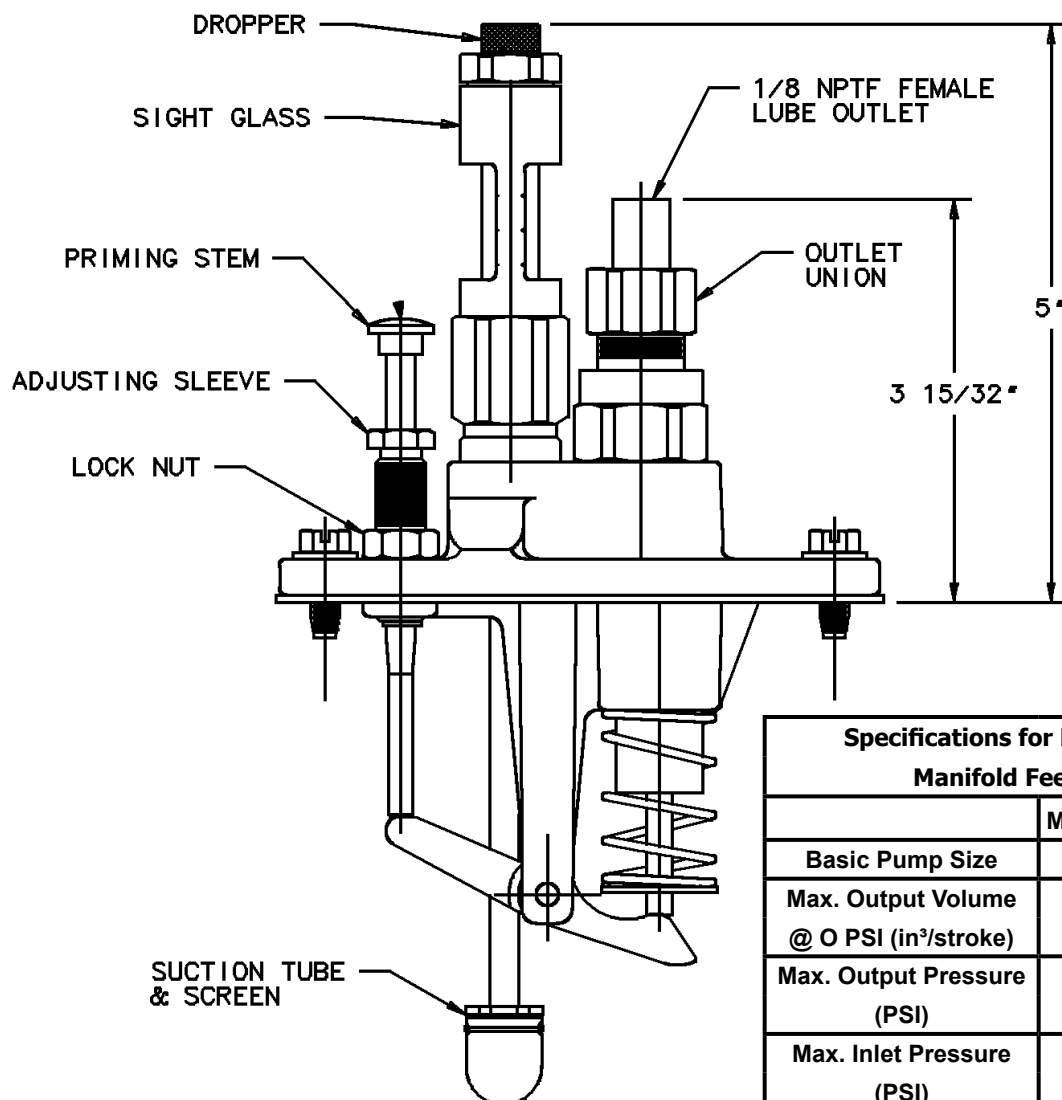
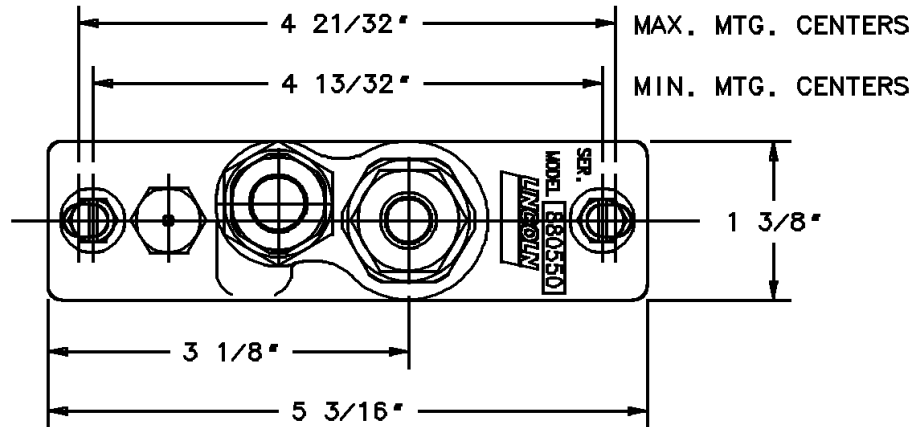




Models 880550, 880560 MODEL 55i LUBRICATOR PUMPS Series "C"

Standard Vacuum Feed Pump
Includes Viton Seals for Petroleum or
Synthetic Lubricants.
Max. Oil viscosity - 8000 SUS

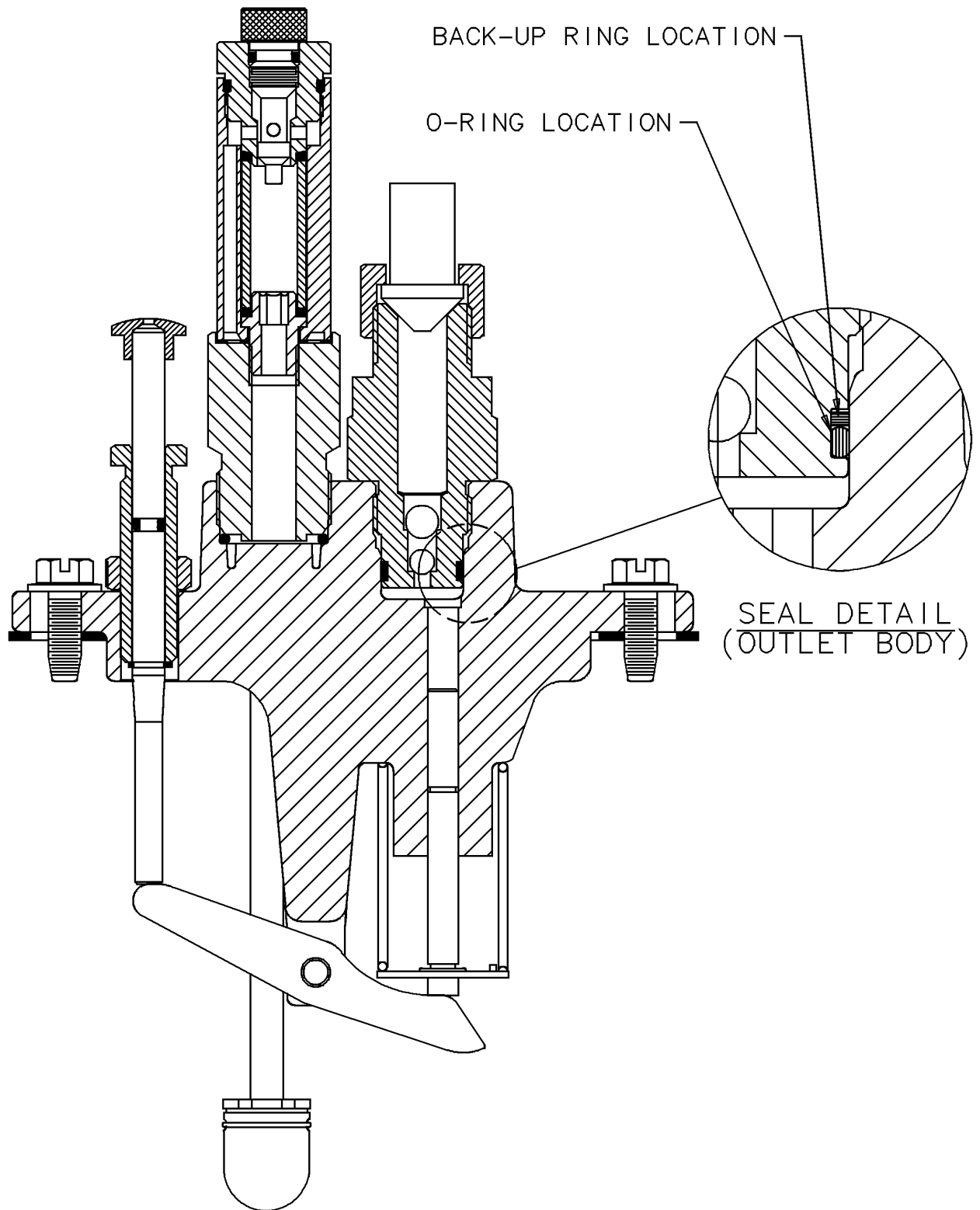
MODEL 880550 1/4" PLUNGER: 6000 PSI MAX. PRESSURE.
MODEL 880560 3/8" PLUNGER: 3500 PSI MAX. PRESSURE.



Specifications for Pressurized Suction,
Manifold Feed Type Pumps

	Model 880550	Model 880580
Basic Pump Size	1/4	3/8
Max. Output Volume @ 0 PSI (in ³ /stroke)	0.018	0.042
Max. Output Pressure (PSI)	6000	3500
Max. Inlet Pressure (PSI)	100	100

Models 880550, 880560
MODEL 55i LUBRICATOR PUMPS
Series "C"



PUMP ASSEMBLY CUTAWAY VIEW



Models 880550, 880560 MODEL 55i LUBRICATOR PUMPS Series "C"

PUMP DESCRIPTION

The Model 55i Lubricator Pump is an improved version of the previous Lincoln Model 55 Lubricator Pump. Pump performance and serviceability have been improved with the Model 55i. The pump has been simplified by reducing the part count. The number of seals have been reduced by creating a unit pump body, thus reducing the number of service parts and possible leak problems.

PUMP OPERATION

The pump is operated by a rotating cam against the pumps rocker arm, causing the pump's plunger to reciprocate within it's bore in the pump body.

The pump output is set by the adjusting sleeve on top of the pump body. The sleeve limits the stroke length of the pump plunger thus limiting the pump output. Full pump output may be obtained when the adjusting sleeve is fully extended out of the top of the pump body, allowing for full plunger stroke. Maximum recommended oil viscosity is 8000 SUS.

SUCTION STROKE

As the plunger moves downward, oil is drawn through the suction check and into the plunger bore from the small reservoir in the sight glass. Reducing the volume of oil in the sight glass creates a vacuum which draws oil from the lubricator reservoir, through the suction tube and into the outside passage in the sight glass. The oil will then enter the dropper and drip into the sight glass reservoir, replacing the oil removed by the suction stroke. The quantity of oil delivered may be determined by counting the drops of oil falling out of the dropper.

DISCHARGE STROKE

As the plunger moves upward, oil is forced from the plunger bore through the outlet checks and into the lubrication point feedline. The suction check prevents any back flow of oil into the sight glass assembly and allows any oil that may bypass the plunger to be returned to the sight glass, area through a return passage.

STARTING INSTRUCTIONS

- 1) Remove the dropper from the sight glass and fill approximately 1/3 full of oil.
- 2) Manually operate the pump with the priming stem until oil, without air bubbles, flows from pump outlet.
- 3) Connect the feedline to the pump outlet union and manually operate the pump with the priming stem until the feedline is filled.
- 4) Connect the feedline to the lubrication point. A feedline check valve at the lubrication point is recommended and is available as an accessory item.
- 5) Refill the sight glass to the 1/3 full level.
- 6) Refill the lubricator reservoir and adjust the pump output.

SETTING PUMP OUTPUT

Count the number of drops falling through the sight glass in one minute. Set the adjusting sleeve to obtain the desired quantity and secure the setting with the locknut.

Conversion factors:

1 drop = .002 cu. in.

500 drops = 1 cu. in.

SIGHT GLASS:

The sight glass gives a visual indication of the condition of the oil flowing through the lubrication pump.

An increasing oil level indicates absorption of air in the sight glass by the oil passing through. Over fill eliminates visual metering of drops in the sight glass, but has no effect on pump operation.

A decreasing oil level indicates the vacuum in the sight glass is withdrawing entrained air from the oil passing through the sight glass, or a vacuum leak in the pump's inlet circuit. If the decreasing oil level is allowed to continue, an airlock can result.

Under normal conditions, the oil level will raise or fall until an equilibrium is reached, but may change from time to time as the condition of the oil changes. Regardless of the oil level, a continuing passage of the correct oil volume indicates that the pump is operating properly.

AIRLOCK:

Airlocking occurs when air, instead of oil, enters the plunger bore and can not be compressed to a high enough pressure to be forced out of the pump against the feedline back pressure.

Airlocking is caused either by entrained air being separated from the oil by the vacuum in the sight glass, or by air entering the pump when the oil level in the lubricator reservoir is lower than the suction tube inlet. Severely agitated oils, such as oil supplied from a crankcase, will usually contain entrained air. An airlock can be easily detected since, when it occurs, no oil will be visible in the sight glass. If entrained air is found to be a problem, either a pressurized pump supply or a settling tank should be utilized.

An airlock can be eliminated by refilling the lubricator reservoir, and sight glass, loosening the outlet union at the pump outlet, and manually operating the pump with the priming stem until no air bubbles appear at the pump outlet. The airlock may reoccur if the cause is not found and eliminated.

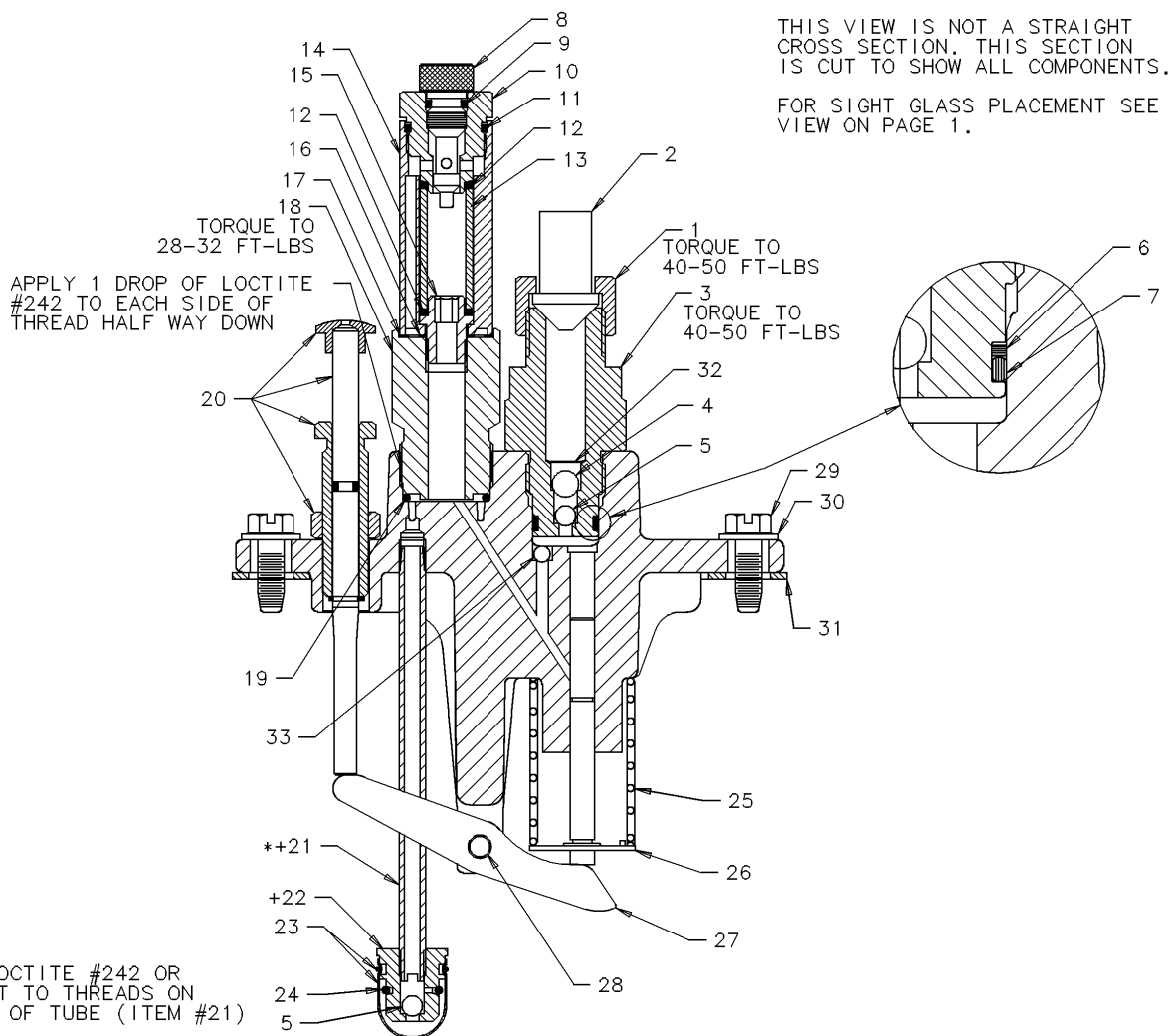
OVER FILL:

Over filling is caused by the oil absorbing the air in the sight glass as it passes through the pump.

This condition does not affect the operation of the pump except that the oil can not be observed coming out of the dropper due to the sight glass being filled with oil.

Normal sight glass operation can be restored by momentarily loosening the dropper at the top of the sight glass to break the vacuum within the sight glass. Do not leave the sight glass dropper open for very long as this will allow all of the oil in the sight glass to drain out possibly causing an airlock condition.

Models 880550, 880560
MODEL 55i LUBRICATOR PUMPS
Series "C"





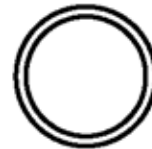
Models 880550, 880560
MODEL 55i LUBRICATOR PUMPS
Series "C"

ITEM NO.	PART NO.	DESCRIPTION	QTY.
1	880006	SLEEVE ASM	1
2	15172	UNION NUT	1
3	250090	OUTLET ADAPTER	1
	MODEL 880550		
	250109	OUTLET ADAPTER	1
	MODEL 880560		
4	66003	STEEL BALL	1
5	69102	BALL	2
6	250091	BACK-UP RING	1
	MODEL 880550		
	250170	BACK-UP RING	1
	MODEL 880560		
7	34613	O RING	1
	MODEL 880550		
	34609	O RING	1
	MODEL 880560		
8	16424	PLUG	1
9	34611	O-RING	1
10	16425	CAP	1
11	34685	O-RING	1
12	34659	O-RING	2
13	249265	SIGHT GLASS	1
14	275950	BODY CASTING	1
15	15703	SCREW	1
16	33149	GASKET	1
17	33150	GASKET	1
18	16585	EXTENTION	1
19	34760	O-RING VITON	1
20	250111	FLUSHING UNIT	1
21	250136	SUCTION TUBE	1
22	93420-1	CHECK BODY	1
23	69879	STRAINER	1
24	34659	O RING	1
25	250117	SPRING	1
26	48522	RETAINER	1
27	250177	ROCKER ARM	1
28	250224	GROOVED PIN	1
29	70224	SCREW	2
30	250130	WASHER, BELLEVILLE	2
31	250132	GASKET	1
32	250165	RETAINER	1
33	272414	BALL 5/32 GR25 CRM	1

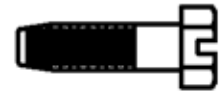
NOTE: THE ILLUSTRATIONS ON THIS PAGE ARE SHOWN ACTUAL SIZE..



ITEM 6
BACK-UP
RING
880550



ITEM 6
BACK-UP
RING
880560



ITEM 28
SCREW



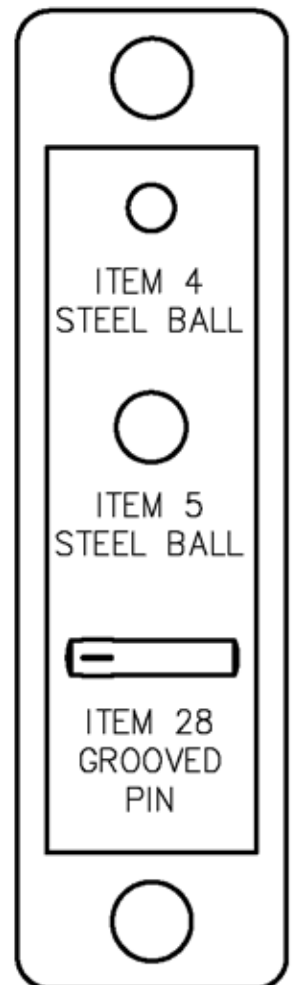
ITEM 30
BELLEVILLE
WASHER



ITEM 7
O-RING
880550



ITEM 7
O-RING
880560



ITEM 4
STEEL BALL

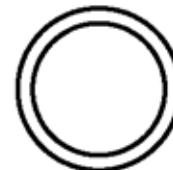
ITEM 5
STEEL BALL

ITEM 28
GROOVED
PIN

ITEM 32
GASKET



ITEM 9
O-RING



ITEM 17
GASKET



ITEM 11
O-RING



ITEM 19
O-RING



ITEM 16
GASKET



ITEM 24
O-RING

LUBRICATOR ACCESSORIES

Lube Sentries

- Model 880447** Monitors camshaft rotation and reservoir oil level. See Service Manual Section M30, Page 10 Series.
- Model 880456** Same as 880447 except with 1" short suction tube. See Service Manual Section M30, Page 10 Series.

Oil Level Regulator

- Model 880496** Automatically fills lubricator reservoir. See Service Manual Section M30, Page 9 Series.

Lubricator Flow Switches

Note: To be used with non-conductive fluids only.

Caution: Lubricator must be properly grounded.

- Model 880463** Used on individual Type 55 Lubricator pumps to monitor lubricant flow. See Service Manual Section M31, Page 9 Series.
- Model 880466** Same as 880463 except includes terminal for series wiring. See Service Manual Section M31, Page 9 Series.

Armored Pump Sight Glass

- Model 275957** Complete sight glass kit, includes Items 8 - 19. Replace 250142 (Plastic Sight Glass) with 276517© to upgrade from Series "B" to Series "C".

© Indicates change

Americas:
One Lincoln Way
St. Louis, MO 63120-1578
USA
Phone +1.314.679.4200
Fax +1.800.424.5359

Europe /Africa/Middle East
Lincoln GmbH
Heinrich-Hertz-Str. 2-8
69190 Walldorf - Germany
Phone/Fax +49.6227.33-0/-259
www.lincolnindustrial.de

Asia/Pacific:
No. 3 Tampines Central 1
#04-05, Abacus Plaza.
Singapore 529540
Tel +65.6588.0188
Fax +65.6588.3438

© Copyright Lincoln Industrial
Corporation 2010
Printed in USA

Web site:
www.lincolnindustrial.com