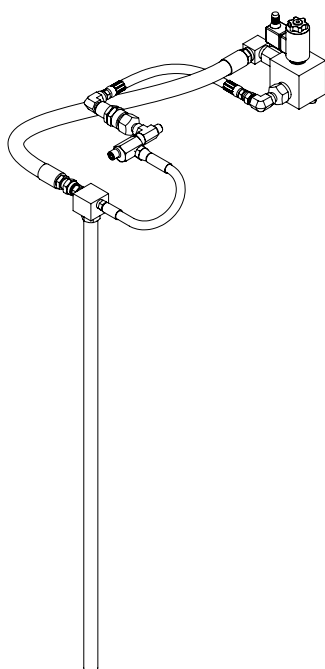


Electric vent valve assembly

85831, 85832, 85833, 85834, 85835, 85836,

for use with FlowMaster II AC electric pumps on
drum cover 85757 120 lb. and 85758 400 lb. drum



Date of issue	December 2012
Form number	404475
Section	C8
Page	368A

⚠ DANGER

Read manual prior to installation or use of this product. Keep manual nearby for future reference. Failure to follow instructions and safety precautions may result in death or serious injury.

Contents

Safety 3

Use of this manual..... 3

Overview..... 3

General description and information 3

Assembly 4

Parts 6

Lincoln industrial standard warranty..... 9

Safety

Read and carefully observe these installation instructions before installing, operating or troubleshooting the assembly. The assembly must be installed, maintained and repaired exclusively by persons familiar with the instructions.

Install the assembly only after safety instructions and this guide have been read and are completely understood.

Adequate personal protection must be used to prevent splashing of material on the skin or in the eyes.

Always disconnect power source (electricity, air or hydraulic) from the pump when it is not being used.

This equipment generates very high grease pressure. Extreme caution should be used when operating this equipment as material leaks from loose or ruptured components can inject fluid through the skin and into the body. If any fluid appears to penetrate the skin, seek attention from a doctor immediately.

Do not treat injury as a simple cut. Tell attending doctor exactly what type of fluid was injected.

Any other use not in accordance with instructions will result in loss of claim for warranty or liability.

- Do not misuse, over-pressurize, modify parts, use incompatible chemicals, fluids, or use worn and/or damaged parts.
- Do not exceed the stated maximum working pressure of the pump or of the lowest rated component in your system.
- Always read and follow the fluid manufacturer's recommendations regarding fluid compatibility, and the use of protective clothing and equipment.
- Failure to comply may result in personal injury and/or damage to equipment.

Table 1

Model	Power source	Drum size
85831	230 V AC	120 lbs. (54 kg)
85832	230 V AC	400 (181 kg)
85833	120 V AC	120 lbs. (54 kg)
85834	120 V AC	400 (181 kg)
85835	24 V DC	120 lbs. (54 kg)
85836	24 V DC	400 (181 kg)

Use of this manual

Overview

This manual details the procedure that must be followed while installing, the electric vent valve assembly on a 120 lb. (54 kg) or 400 lb. (181 kg) drum with a FlowMaster II rotary driven AC electric pump.

All required parts, tools, and equipment needed to complete the installation of the electric vent valve assembly are defined and listed within this manual.

Review of the parts list and nomenclature is recommended before starting disassembly or operation.

General description and information

The electric vent valve assembly is intended to be used with a drum mounted FlowMaster II electric pump in a Centro-Matic lube system. The 2-way normally open solenoid vent valve is to be wired in parallel with the motor on an electric FlowMaster II pump. See wiring diagram in appropriate pump owner's manual.

Inspection

If over pressurizing of the equipment is believed to have occurred, contact the factory authorized warranty and service center nearest you for inspection of the pump.

Specialized equipment and knowledge is required for repair of this pump.

Annual inspection by the factory authorized warranty and service center nearest you is recommended.

Damaged Pumps

Do not use any pump that appears to be damaged, badly worn or operates abnormally. Remove the pump from service and contact the factory authorized warranty and service center nearest you for repairs.

A list of authorized warranty and service centers is available upon request.

Assembly

Vent valve

- 1 Fasten pump to drum cover.
- 2 Assemble hex nut (2) and gasket (3) to vent tube (1). Refer to **figure 1**.
- 3 Insert end of vent tube (1) through drum cover (24).

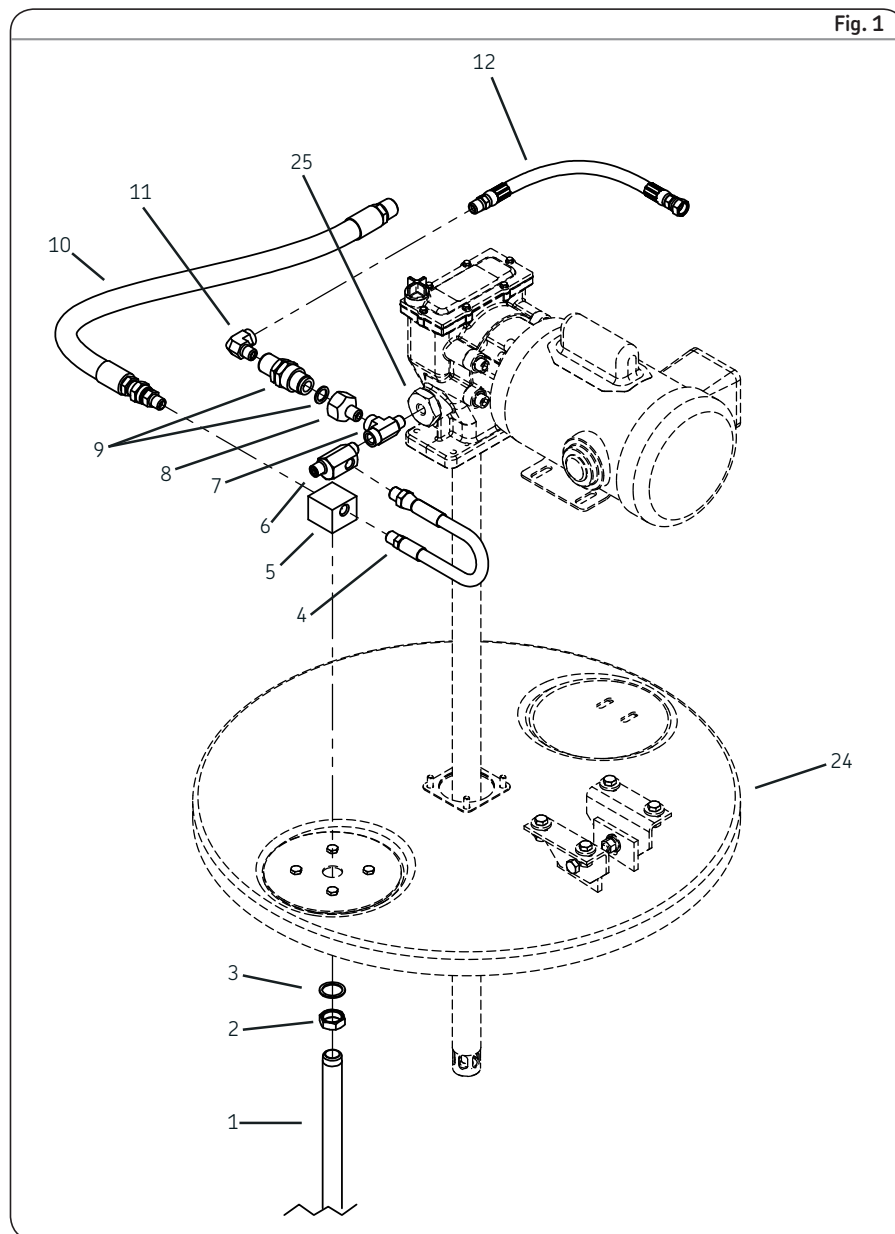
- 8 Refer to **figure 1** and thread elbow (11) into check assembly (9).

End of procedure

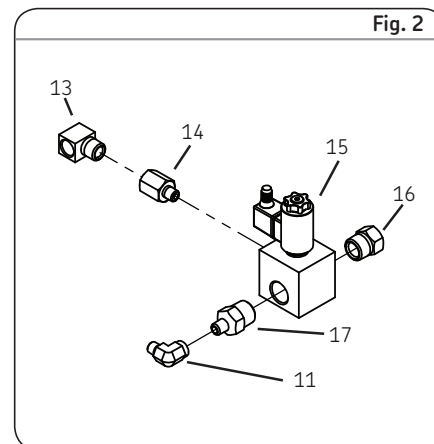
Solenoid vent valve

- 1 Refer to **figure 2** and thread the street elbow (11) onto the reducer nipple (17) and tighten hand tight.

- 2 Insert reducer nipple (17) into block valve (15) and tighten hand tight.
- 3 Thread adapter (16) into block valve (15).
- 4 Insert adapter (14) into block valve (15)
- 5 Position the assembled solenoid valve (15) on the drum cover (24) or bracket (26).



- 4 Refer to **figure 1** and align vent fitting (5).
- 5 Tighten hex nut (2) securely against bottom of drum cover (24).
- 6 Insert and thread external run tee (7) into pump outlet (25) as shown in **figure 1**.
- 7 Thread check assembly (8, 9) into external run tee (7).



- 6 Place lock washers (18) on hex head screws (19).



Notice

If mounting on 120 lb. (54 kg) drum, solenoid valve (15) will mount on bracket (26). If mounting on 400 lb. (181 kg) drum, solenoid valve (15) will mount directly to drum cover (24).

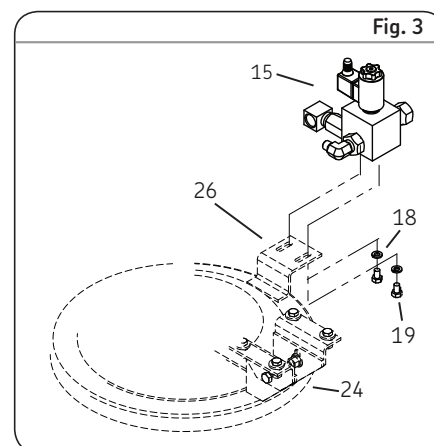
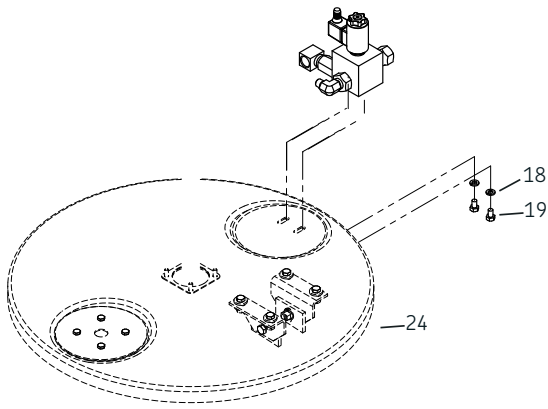


Fig. 4



- 7 Insert hex head screws (19) through drum cover (24) or bracket (26) and into the solenoid vent valve (15).
- 8 Tighten hex head screws (19).
- 9 Refer to **page 3, figure 1** and connect hose assembly (12) to both elbows (11).
- 10 Assemble hose assembly (10) to elbow (13) and to vent fitting (5).
- 11 Thread safety unloader (6) into internal run tee (7) and align as shown. Refer to **page 4, figure 1**.
- 12 Connect hose assembly (4) to safety unloader (6) and to vent fitting (5).

End of procedure

Parts list

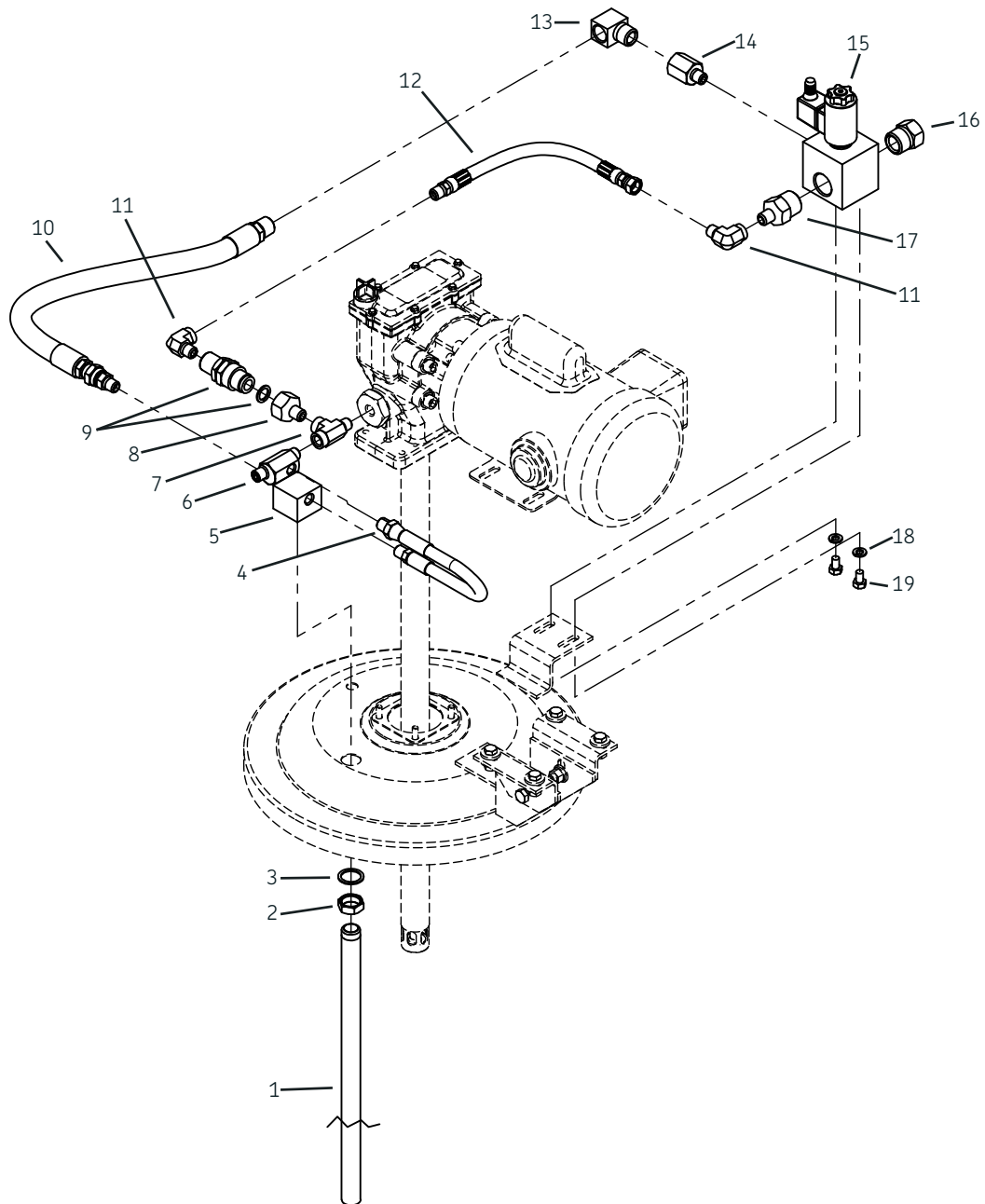
Item no.	Description	Part no.	Quantity
1	Vent tube	See below	1
2	Hex nut, 7/8–14	12538	1
3	Gasket	31010	1
4	Hose assembly	272711	1
5	Vent fitting	272717	1
6	Safety unloader, 4,000 psi (275 bar)	272722	1
7	Male run tee, 1/4 NPTF	276370	1
8	Adapter	12213	1
9	Check assembly	81938	1
10	Hose assembly	270726	1
11	Street elbow, 1/4 NPTF	277439	2
12	Hose assembly	277441	1
13	Elbow, 1/2 NPTF	12134	1
14	Adapter	12989	1
15	Solenoid vent valve	See below	1
16	Adapter	12018	1
17	Reducer nipple	14727	1
18	Lock washer, 5/16	66246	2
19	Hex head screw, 5/16–18 x 1/2	50034	2
20	DIN connector	276904	1
21	Solenoid coil	See below	1
22	Cartridge valve	276899	1
23	Vent valve body	276901	1

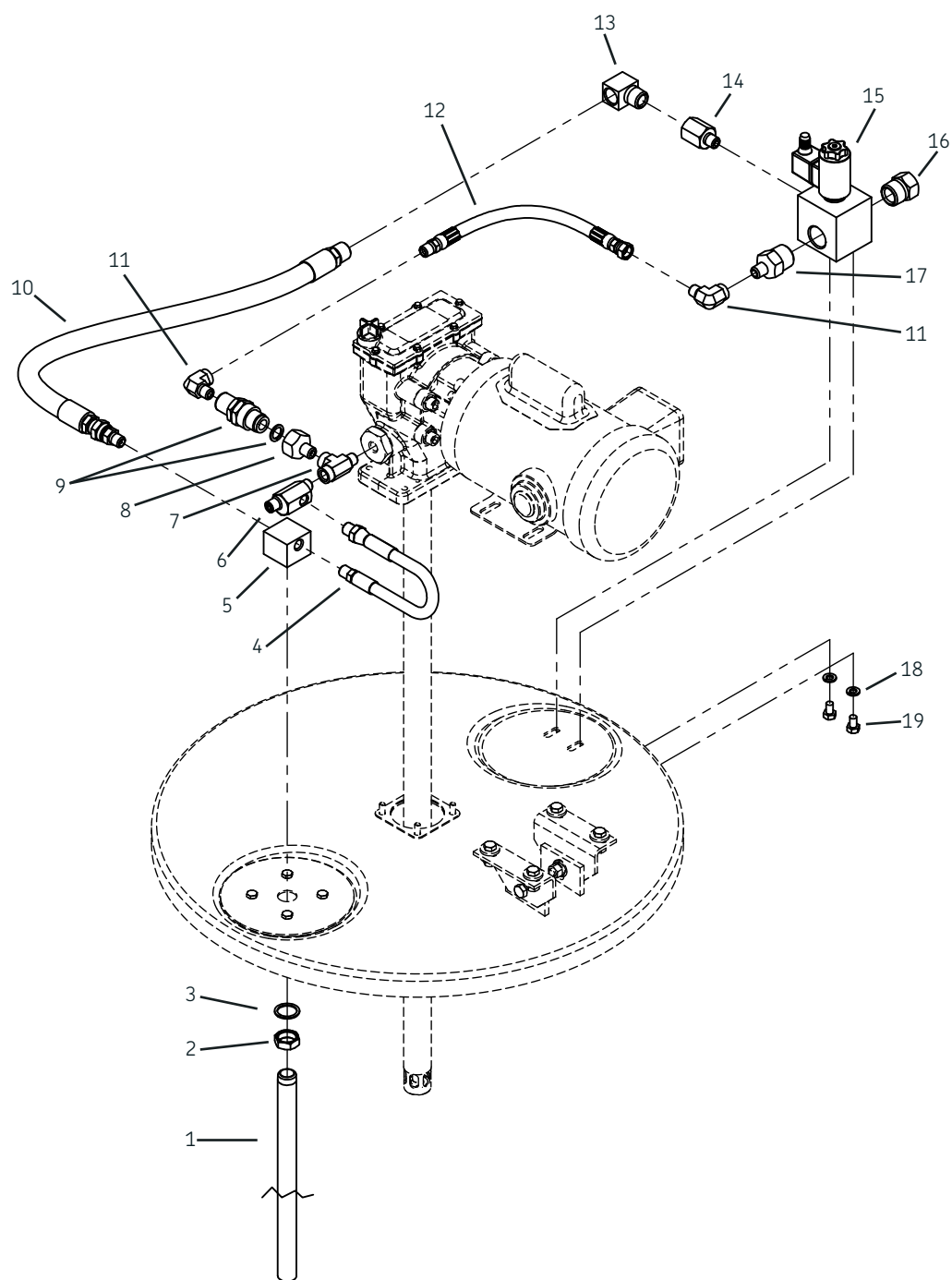
Non-common repair parts

Model	Power	Drum	Part number		
			Vent tube	Solenoid valve	Solenoid coil
85831	230 V AC	120 lb. (54 kg)	67290	276969	276967
85832	230 V AC	400 lb. (181 kg)	67341	276969	276967
85833	120 V AC	120 lb. (54 kg)	67290	276968	276965
85834	120 V AC	400 lb. (181 kg)	67341	276968	276965
85835	24 V DC	120 lb. (54 kg)	67290	276903	276900
85836	24 V DC	400 lb. (181 kg)	67341	276903	276900

¹⁾ Included in 275186 repair kit

²⁾ Included in 277723 repair kit





Lincoln industrial standard warranty

Standard limited warranty

Lincoln warrants the equipment manufactured and supplied by Lincoln to be free from defects in material and workmanship for a period of one (1) year following the date of purchase, excluding there from any special, extended, or limited warranty published by Lincoln. If equipment is determined to be defective during this warranty period, it will be repaired or replaced, within Lincoln's sole discretion, without charge. This warranty is conditioned upon the determination of a Lincoln authorized representative that the equipment is defective. To obtain repair or replacement, you must ship the equipment, transportation charges prepaid, with proof of purchase to a Lincoln Authorized Warranty and Service Center within the warranty period.

This warranty is extended to the original retail purchaser only. This warranty does not apply to equipment damaged from accident, overload, abuse, misuse, negligence, faulty installation or abrasive or corrosive material, equipment that has been altered, or equipment repaired by anyone not authorized by Lincoln. This warranty applies only to equipment installed, operated and maintained in strict accordance with the written specifications and recommendations provided by Lincoln or its authorized field personnel.

This warranty is exclusive and is in lieu of any other warranties, express or implied, including, but not limited to, the warranty of merchantability or warranty of fitness for a particular purpose. Warranty on items sold by Lincoln, but not manufactured by Lincoln are subject to the warranty consideration, if any, of their manufacturer (such as hoses, hydraulic and electric motors, electrical controllers, etc.) Assistance in making such warranty claims can be offered as required.

In no event shall Lincoln be liable for incidental or consequential damages. Lincoln's liability for any claim for loss or damages arising out of the sale, resale or use of any Lincoln equipment shall in no event exceed the purchase price. Some jurisdictions do not allow the exclusion or limitation of incidental or consequential damages, therefore the above limitation or exclusion may not apply to you.

This warranty gives you specific legal rights. You may also have other rights that vary by jurisdiction.

Customers not located in the Western Hemisphere or East Asia: Please contact Lincoln GmbH and Co. Kg, Walldorf, Germany, for your warranty rights.

Special limited warranties

Special limited 2 year warranty sl-v series, single injectors-85772, 85782, replacement injectors-85771, 85781 and the DC electric FlowMaster II

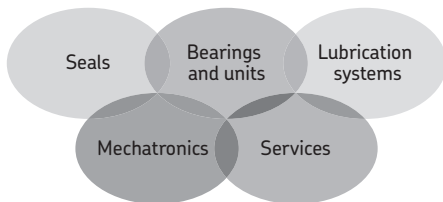
Lincoln warrants the DC electric FlowMaster II and SL-V Injector series to be free from defects in material and workmanship for two (2) years following the date of purchase. If an injector model (single or replacement) is determined to be defective by Lincoln, in its sole discretion, during this warranty period, it will be repaired or replaced, at Lincoln's discretion, without charge.

Special limited 5 year warranty series 20, 25, 40 bare pumps, DC electric FlowMaster II, pmv bare pumps, heavy duty and 94000 series bare reels

Lincoln warrants series 20, 25, 40 bare pumps, pmv bare pumps, heavy duty (82206), mini bench (81133, 81323), and all 94000 LFR series (single arm and dual arm) bare reels to be free from defects in material and workmanship for five (5) years following the date of purchase. If equipment is determined by Lincoln, in its sole discretion, to be defective during the first year of the warranty period, it will be repaired or replaced at Lincoln's discretion, without charge. In years two (2) and three (3), the warranty on this equipment is limited to repair with Lincoln paying parts and labor only. In years four (4) and five (5), the warranty on this equipment is limited to repair with Lincoln paying for parts only.

Lincoln Industrial contact information

To find Lincoln Industrial's nearest service center in the United States, call customer service at 314-679-4200. For international callers dial 01-314-679-4200. You may also use our website lincolnindustrial.com.



The Power of Knowledge Engineering

Drawing on five areas of competence and application-specific expertise amassed over more than 100 years, SKF brings innovative solutions to OEMs and production facilities in every major industry worldwide. These five competence areas include bearings and units, seals, lubrication systems, mechatronics (combining mechanics and electronics into intelligent systems), and a wide range of services, from 3-D computer modelling to advanced condition monitoring and reliability and asset management systems. A global presence provides SKF customers uniform quality standards and worldwide product availability.

® SKF is a registered trademark of the SKF Group.

® Lincoln is a registered trademark of Lincoln Industrial Corp.

™ FlowMaster II is a trademark of Lincoln Industrial Corp.

™ Centro-Matic is a trademark of Lincoln Industrial Corp.

Mobil is a trademark of Exxon Mobil Corp.

Loctite is a registered trademark of Henkel Corp.

© SKF Group 2012

The contents of this publication are the copyright of the publisher and may not be reproduced (even extracts) unless prior written permission is granted. Every care has been taken to ensure the accuracy of the information contained in this publication but no liability can be accepted for any loss or damage whether direct, indirect or consequential arising out of the use of the information contained herein.

SKF PUB LS/14 13474 EN • December 2012 • Form 404475

